

# M1500 FOOD

## VERTICAL PACKER FOR FORMING/FILLING/SEALING IN PLASTIC POUCHES

### CHARACTERISTICS

- EXCELLENT SEALING ABILITY
- HIGHLY FLEXIBLE PRODUCTION
- USER FRIENDLY
- LOW MAINTENANCE

**RATE OF PRODUCTION: 1 800 - 3 000 PPH**  
**BAG VOLUME: 70 - 1 000 ML**

### LIQUID PRODUCTS

PASTEURISED OR ESL MILK, WATER FRUIT JUICES...

### VISCOUS PRODUCTS

CURDLED MILK, LIQUID YOGHURT, NECTARS, CREAM, GREEK YOGHURT, KEFIR, SMETANA, RAYEB...

### PASTY PRODUCTS

SAUCES, SOUPS, SYRUPS...



### PACKAGING IN PLASTIC POUCHES / PILLOW POUCHES

THE RESPONSIBLE AND THRIFTY ALTERNATIVE TO SYSTEMS FOR PACKAGING MILK IN CARTONS OR GLASS OR PLASTIC BOTTLES.

#### ECOLOGICALLY-RESPONSIBLE

100% recyclable polyethylene film: 7g of LDPE per 1 litre pouch

#### REDUCED STORAGE SPACE

Vacuum packed products require less storage space than rigid or semi-rigid packages.

#### ECONOMICAL PACKING SUPPORT

The multi-layer films available on the market offer excellent product storage at a reduced packaging support cost.

### TECHNICAL DESCRIPTION

THE M1500 IS PERFECT FOR SHAPING, FILLING AND SEALING PILLOW POUCHES USING PE FILM ON REELS.

The pouches are filled with air-injected from a buffer tank that is under constant pressure and equipped with a proportional valve and a level sensor.

The M1500's mechanical technology means that it is operated with actuators, making it easy to use, with precise dosage at high speeds.

Its frame is built with steel covered AINSI 304L stainless steel to ensure its firmness and longevity.

A Clean-in-Place (CIP) has been integrated into the M1500's design. All of the parts that come into contact with the product are built from stainless steel.

Its pneumatic sealing grip control and its independent electrical cabinet make its maintenance easy and inexpensive.

# M1500 FOOD

## STANDARD EQUIPMENT

- Pouch counter on the display
- Pouches disinfected in germicidal UV tubes before being shaped
- Protective rubber caps:
- Teflon rollers on upper and lower sealing grips
- Control screen
- End of film roll system that halts the machine
- CIP control even in automatic

## SPECIFICATIONS

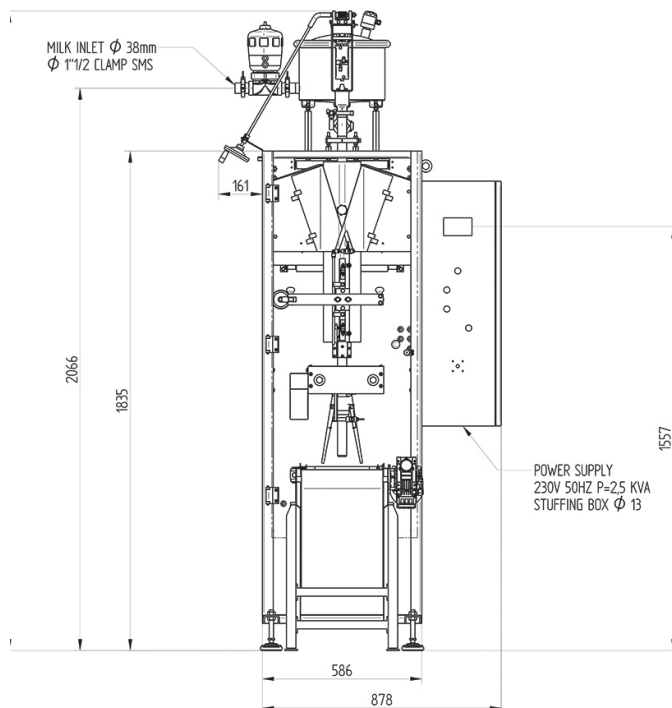
**Film thickness:** 50 - 120 microns

### Reel sizes:

- External diameter: 350 mm
- Interior diameter of mandrel: 76 mm
- Film width: 324 mm (other sizes on request)

**Pouch sizes:** Adjustable length of 40 - 260 mm

## LAYOUT



## OPTIONS

### Coding device / 3 coding types are available:

- Pressure stamp on the longitudinal seal
- Programmable stamp with hot transfer tape
- Ink jet stamp

**Dosage** by pump for viscous products (helicoïdal pump with lobes or flexible impulser)

### Exit conveyor

**Automatic packer:** the M 1500 comes with an optional automatic pouch packing system with a counter.

### E.S.L. Option (Extended Shelf Life):

filled using sterilised air and sterilisation of the air line

### Air cooling unit

## UTILITIES

**Power supply:** 230 V Mono – 50 Hz

Other voltages and frequencies on request - P = 2.5 kVA.

### Compressed air supply:

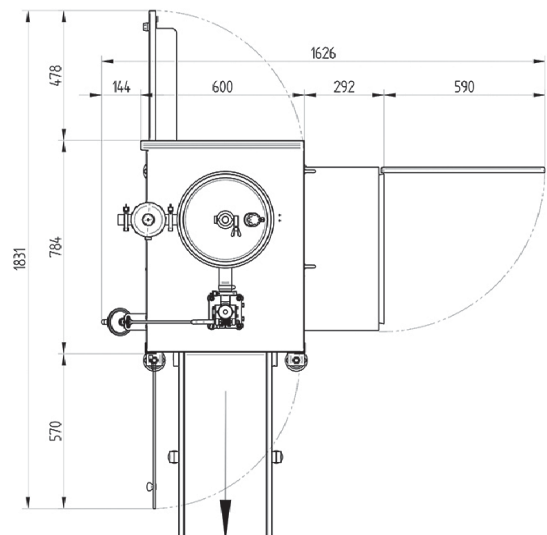
Input pressure = 7 - 9 bar - Effective pressure = 6 bar

Output: Q = 14 Nm<sup>3</sup>/h

### Cooling water supply:

Inlet pressure = 1 - 6 kg/cm<sup>2</sup> - Q = 100 litres/h Max. Temp. = 20°C - 30°C

Free return



**SEPAK**

SEPAK INDUSTRIES PTY LTD

[www.sepak.com.au](http://www.sepak.com.au)

YOUR PACKAGING ENGINEERING PARTNER

THIMONNIER FRANCE – Australian representative Sepak Industries Pty Ltd, Sydney Australia.

[www.sepak.com.au](http://www.sepak.com.au)